



PASSION OF CONCRETE

For more than 20 years in the field of Civil and Industrial Engineering, ArtBeton Contracting & Trading LLC, treated all its projects with raging passion and dedication. We gained all our clients confidence and continuously pledge ourself to providing only the first-class and the most reliable service and materials available.

Regards,
ArtBeton team



Maamura 56, Wholesale Market str. 995, Office 01,
Al Mana Business Center 3, P.O. Box 19115, Doha - Qatar



3384 1110 / 4029 8578



artbeton.qa





INTRODUCTION

ArtBeton Contracting & Trading, LLC, provides only the best construction materials from the most trusted suppliers, to ensure the durability and stability of your projects. ArtBeton distributes a wide array of construction essentials including,

but not limited to concrete precast materials, waterproofing membranes and bitumen's, services and spare parts supply for hollow core concrete factories and other general materials supply for any kind of construction sites.

The company is committed to technology and innovation that we only choose the highest quality products and has passed international quality standards. ArtBeton is striving to succeed in the business by constantly devoting itself to the ever-changing customer expectations and delivering only the greatest and state-of-the-art products that would suit your business needs.

ArtBeton Contracting & Trading, LLC, offers a vast variety of construction essentials which are ISO certified and passed international standards.

Our main products are:

Civil construction works

Concrete precast materials supply

Waterproofing membranes & bitumen

Cementitious waterproofing materials

Services and spare parts supply for precast and hollow core concrete factories

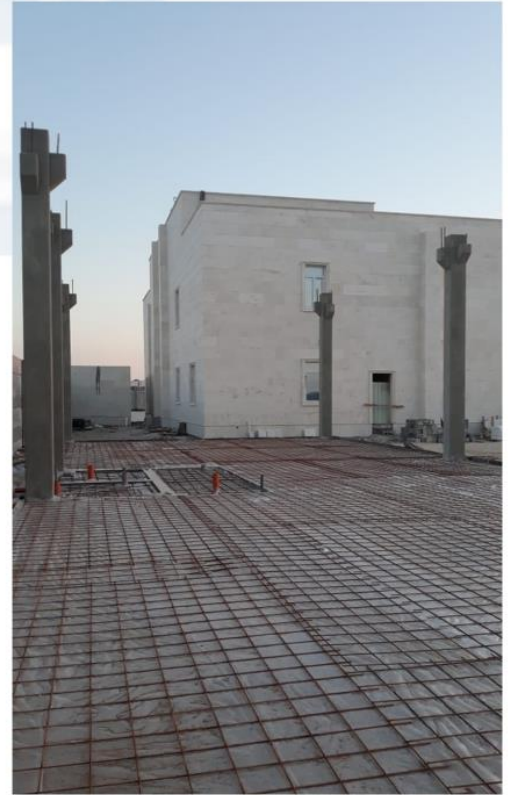
ArtBeton company will provide you with years of experience and professional staff. All our team are passionate what we doing, because our slogan - Passion of Concrete

OUR PROJECTS



OUR PROJECTS

Private Villa 1 Majlis



OUR PROJECTS

Private Villa 1 Boundary wall



OUR PROJECTS

Private Villa 1 Security & CCTV





OUR PROJECTS



Private farm executed by ArtBeton.
2900 L.m. of H.C. Boundary wall,
including excavation.

Erection works, binding works.
Civil works of construction within
95 working days.





OUR PROJECTS

Civil works of KAHRAMAA Substation for private villa



SCOPE OF WORK

ArtBeton Contracting & Trading LLC, are ready to provide wide range of scope of work, such as trading or contracting.



As contracting department, we understand how important to listen our clients and be very attentive to each small detail.

We are happy to follow up contract from the begging and till the end. ArtBeton proudly presents our main directions such as supply and erection of hollow core slabs, soak away manholes, oncrete reinforced beams. We are ready for challenge with any kind of client requirements to find the cost-time-saving solution any time

Our trading department always in search 24/7 regime for the best goods and materials for our customers, Including quality and price. As modern company, we expand our business as a traditional and innovative ways. We supplying waterproof bitumen materials like APP or SBS mebrane, self-adhesive sealant tape, primer and mastic.

A wide range of precast accessories such as anchors, lifting sockets, loops, ring clutchs, recess formers and etc. - could satisfy any customer.

Also we supplier of spare part for hollowcore extruders: feed screws, sleeves, side plates and wear parts, rings, roller chaines, socket pins, diamond cutting blades and etc.

CONTRACTING



CONTRACTING

Supply and erection of hollowcore slabs



Hollowcore slabs derive their name from the circular voids or cores which run throughout the slab. The units have a smooth finish and maximum capacity of 2.3kn/sqm over 16m span. They are available in standart 1200mm width and in depths of 150, 200, 265, 320, 400 and 500mm. They can be used effectivley in all types of building providing a fast and cost effective structure.

Typical Applications include:

Flooring or roofing for single and multi-storey developments. The long spans like 16.5m (max. 25m) are ideal for most residential or commercial applications such as apartments, offices, factories, private villas and etc.

Wall panels - Hollowcore can be installed wither horizontally or vertically to provide an effective wall cladding system, often used with steel strucures

Benefits:

Hollowcore spans up to 25m, which minimises column requirements.

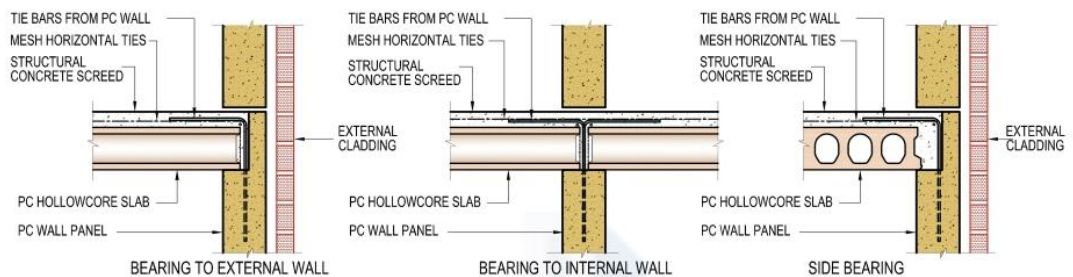
Factory production decreases dependancy on weather conditions and increses programme planning reliability

Eliminates the requirements for coslty excavation for ground floors, removes the needs for provision/compaction of infill material and provides an immediate dry working platform.

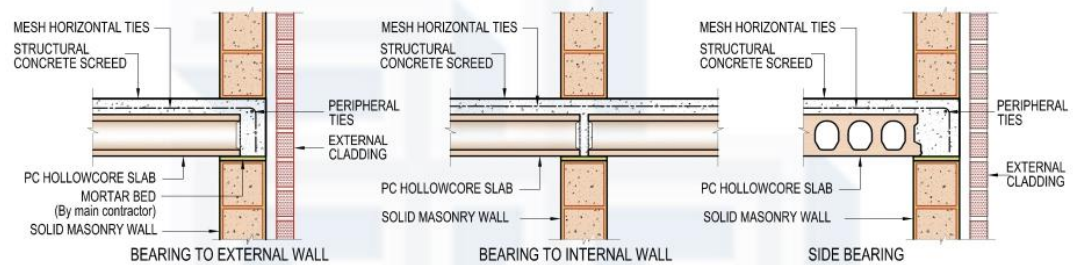
CONTRACTING

Supply and erection of hollow core slabs

Hollow core slabs details

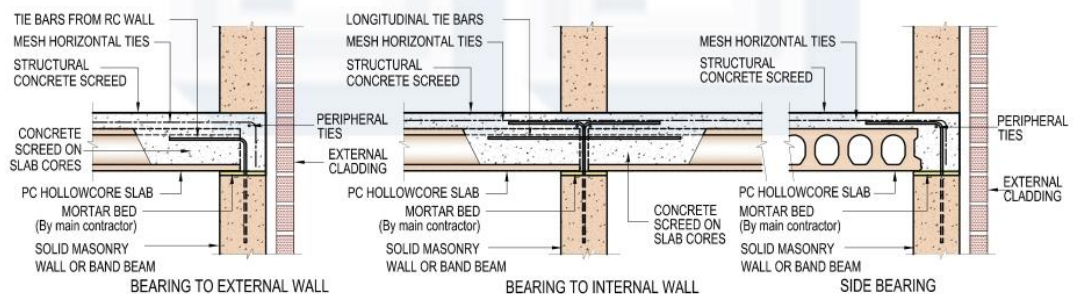


BEARING TO PRECAST WALL

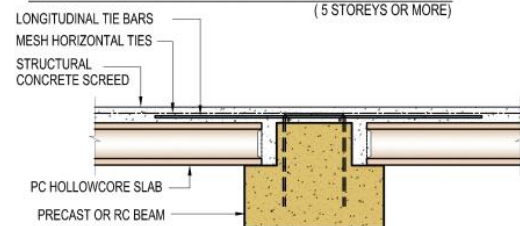


BEARING TO SOLID MASONRY WALL

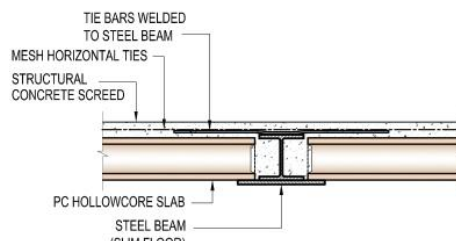
NOTE: Non-structural screed to terminate at wall face and walls to extend to precast units.



BEARING TO RC WALL OR BAND BEAM (5 STOREYS OR MORE)



BEARING TO PC OR RC BEAM

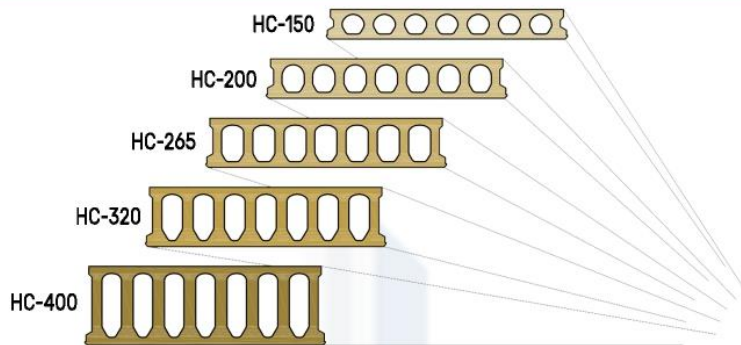


BEARING TO STEEL BEAM

CONTRACTING

Supply and erection of hollow core slabs

Hollow core slabs



Hollowcore Load Spans

CLEAR SPAN (m)	2.0	2.5	3.0	3.5	4.0	4.5	5.0	5.5	6.0	6.5	7.0	7.5	8.0	8.5	9.0	9.5	10.0	10.5	11.0	11.5	12.0	12.5	13.0	13.5	14.0	14.5	15.0	15.5	16.0	16.5			
HC-150																																	
Without structural screed	48.1	36.5	27.5	20.2	15.1	11.5	9.0	7.1	5.7	4.5	3.6	2.9	2.4	1.8	1.4	1.1	0.8																
With 75mm structural screed	46.3	35.8	28.9	24.0	20.5	17.3	13.5	9.8	7.1	5.0	3.3	1.9	0.8																				
75mm Structural screed + Temporary propping	46.3	35.8	28.9	24.0	20.5	17.7	14.6	11.5	9.1	7.3	5.8	4.4	3.2	2.3	1.4	1.1	0.8																
HC-200																																	
Without structural screed			42.4	35.6	30.6	25.5	20.3	16.4	13.4	11.1	9.3	7.8	6.5	5.5	4.7	3.9	3.3	2.8	2.3														
With 75mm structural screed			40.9	34.0	29.0	25.2	22.1	19.6	17.6	15.4	12.4	9.9	7.9	6.2	4.8	3.6	2.6	1.8	0.9														
75mm Structural screed + Temporary propping			40.9	34.0	29.0	25.2	22.1	19.6	17.6	15.9	13.8	11.4	9.3	7.7	6.2	5.1	4.0	3.1	2.4														
HC-265																																	
Without structural screed						31.0	25.2	20.8	17.4	14.6	12.4	10.6	9.1	7.8	6.8	5.8	5.0	4.4	3.7	3.2													
With 75mm structural screed						30.4	27.0	24.3	22.0	19.5	16.1	13.4	11.1	9.2	7.6	6.2	5.0	3.9	3.0	2.2	1.5	0.9											
75mm Structural screed + Temporary propping						30.4	27.0	24.3	22.0	19.8	17.3	14.5	12.2	10.3	8.7	7.3	6.1	5.1	4.1	3.3	2.6	2.0											
HC-320																																	
Without structural screed										23.0	19.6	16.8	14.5	12.3	10.7	9.3	8.2	7.2	6.3	5.5	4.8	4.2	3.6										
With 75mm structural screed										27.4	24.2	21.6	18.6	15.3	13.0	11.0	9.3	7.8	6.6	5.4	4.4	3.5	2.7	2.0	1.4	1.8							
75mm Structural screed + Temporary propping										27.4	24.2	21.6	19.4	16.3	14.0	12.0	10.3	8.8	7.6	6.4	5.4	4.5	3.7	3.0	2.4	1.8							
HC-400																																	
Without structural screed															19.3	16.8	14.7	12.9	11.4	10.0	8.8	7.7	6.8	6.0	5.2	4.5							
With 75mm structural screed															22.7	20.5	17.7	15.2	13.1	11.2	9.6	8.2	6.9	5.7	4.7	3.8	3.0	2.2	1.5	0.9			
75mm Structural screed + Temporary propping															22.7	20.5	18.0	15.8	13.8	12.0	10.4	9.0	7.7	6.5	5.5	4.6	3.8	3.0	2.3	1.7			

Note:	Self Weight (Incl. screed)	Reinforcement	Cores
HC-150	2.23 kn/sqm + 1.8 kn/sqm screed	8 nos. 9.3mm diameter strands	7 nos. 110mm wide cores
HC-200	2.74 kn/sqm + 1.8 kn/sqm screed	6 nos. 12.5mm + 2 nos. 9.3mm diameter strands	7 nos. 110mm wide cores
HC-265	3.10 kn/sqm + 1.8 kn/sqm screed	6 nos. 12.5mm + 4 nos. 9.3mm diameter strands	7 nos. 109mm wide cores
HC-320	3.80 kn/sqm + 1.8 kn/sqm screed	8 nos. 12.5mm + 4 nos. 9.3mm diameter strands	7 nos. 103mm wide cores
HC-400	4.92 kn/sqm + 1.8 kn/sqm screed	8 nos. 12.5mm + 4 nos. 9.3mm diameter strands and 2 nos. 9.3mm diameter top strands	7 nos. 97mm wide cores

CONTRACTING

Erection and supply of concrete manholes.

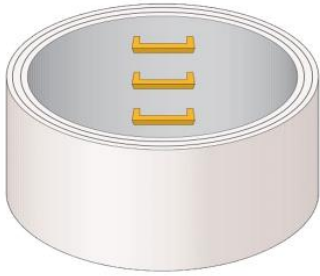
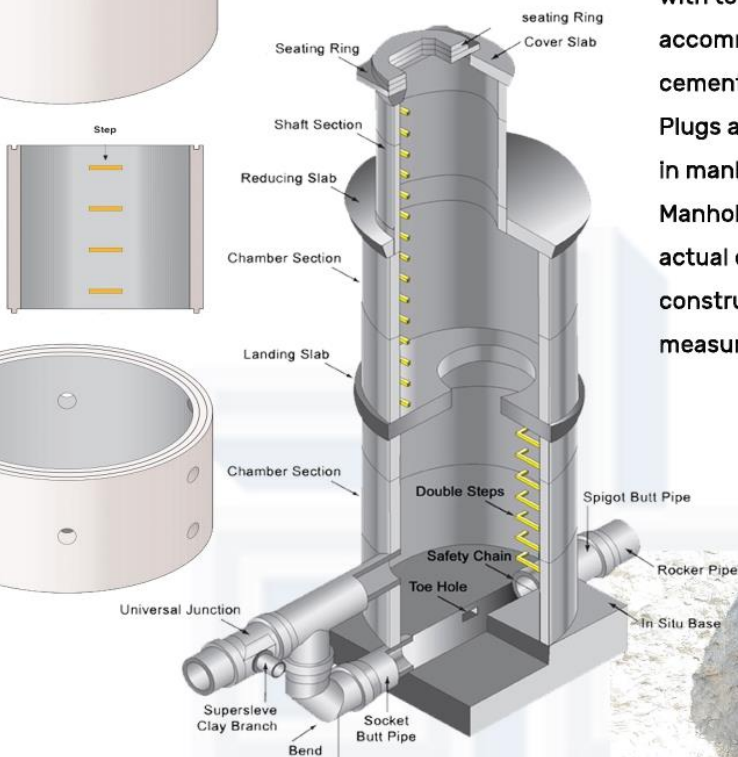


Diagram below of a typical standard manhole construction
 All dimensions are variable

Manhole chamber rings are manufactured with tongue and groove joints designed to accommodate flexible jointing strip or cement mortar

Plugs are available to seal the lifting holes in manhole rings.

Manhole and soakaway depths are nominal, actual depths may vary. Where the height of construction is critical, units should be measured prior to construction.



TRADING

SUPPLYING



LOGISTICS



CREATIVITY



MARKETING



TRADING

Waterproof materials



NIKOBAND sealant tape

NIKOBAND is a universal self-adhesive sealing band. It is produced by placing a color reinforced aluminum covering on a waterproof self-adhesive bitumen layer. The protective film on the adhesive bitumen layer is easy to remove. The material is easy and convenient to use, and it bonds ideally to concrete, plaster, metal, bitumen, stone, wood and other surfaces. The sealing band is designed for sealing seams and joints, repairing cracks, waterproofing, and corrosion protection. NIKOBAND can be used in all climatic zones (as determined in Construction Codes and Regulation (SNIP) 23-01-99*).



Bitumen emulsion primer

TECHNONICOL bitumen emulsion primer #04 is produced on the basis of bitumen dispersion in water. The material does not contain solvents, it has a neutral smell and is ideally suited for work in the premises.



Roofing mastic #21

TECHNONICOL roof mastic #21 is a material that is completely ready to use, consisting of oil bitumen, modified by artificial rubber, mineral fillers and organic solvent. After drying, it forms a high-strength covering with a wide range of operating temperatures, which considerably increases the service life of the protected structures.

Waterproofing mastic #24

TECHNONICOL mastic #24 is a ready-to-use material based on oil bitumen containing process additives, mineral fillers, and solvent.

TRADING

Threaded socket system

Made from all steel construction the swivel lifting eye is a heavy duty lifting device which enables the user to safely lift units from horizontal to vertical and back again if required. The pressure plate makes contact with the unit to generate even distribution on the concrete unit..

ADVANTAGES:

- Colour Coded system as defined in The German Association of Engineers (VDI) Guidance document for lifting systems (VDI/BV-BS-6205 April 2012)
- Matched to fit recess sizes of MFP & PNPL
- SWL matches socket loads classes of Threaded sockets
- CE Marked
- Serial Numbered



Swivel Lifting Eye

Wire Rope threaded lifting loops are manufactured from high specification wire. All loops are clearly marked with the manufactures details, the SWL and an individual serial number.



Standard Lifting Loop

Barrel lifting sockets with a cross hole are widely used in the application of Precast concrete construction, such as lifting beams wall and floor slabs. A reinforcement tail must be fitted to transfer the load into the concrete.



Barrel Lifting Socket

A thick walled flat end lifting socket with a crimped flat end with cross hole, that is designed for lifting. The lifting socket requires a reinforcement tail fitting to the socket to allow the forces to be transferred into the concrete.



Flat End Lifting Socket

SPARE PARTS Extruder machine

We offer wide assortment of spare parts for equipment for producing concrete hollow core slabs by extrusion forming method of Finnish and Italian production. We also realize retrofit installation, adjusting of equipment and personnel training for work optimization of production equipment.



Wear plates



Text



Mass guide



Augers



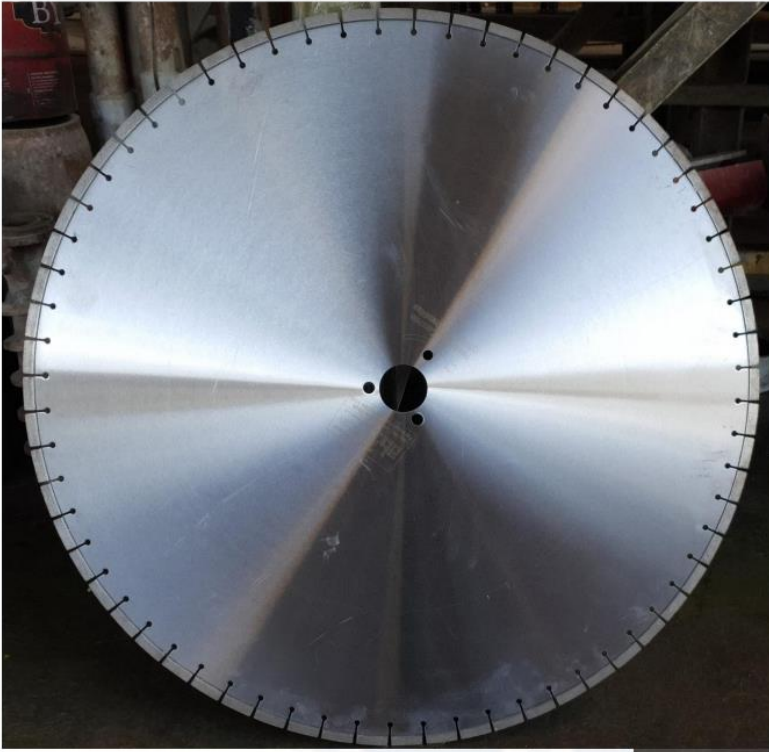
Shafts



Sleeves

SPARE PARTS

Diamond cutting blade



900mm diamond floor saw blade is well cutting for asphalt, reinforced concrete road. Undercut protection segments ensures longer lifetime. Narrow U or key slot give a wider segment and longer lifetime. Wider U slot prevent clogging.

Fits to petrol cutters, bench, floor saw machines and extruders

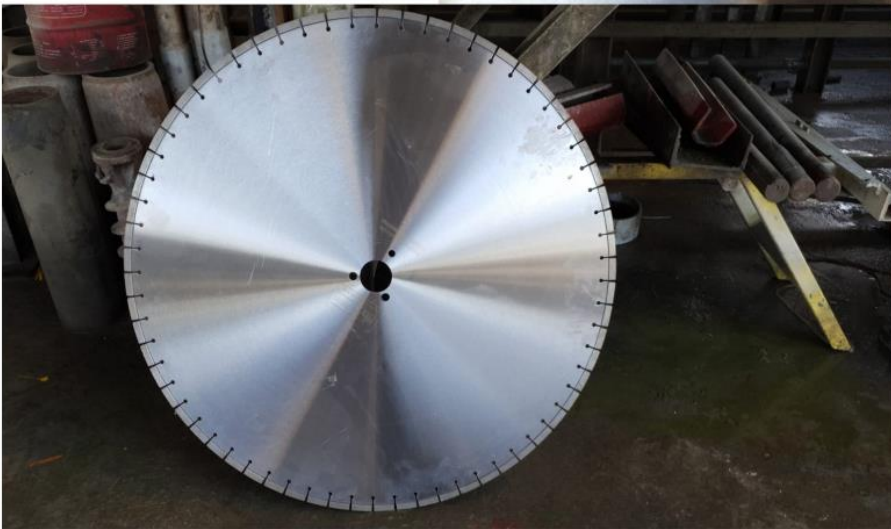
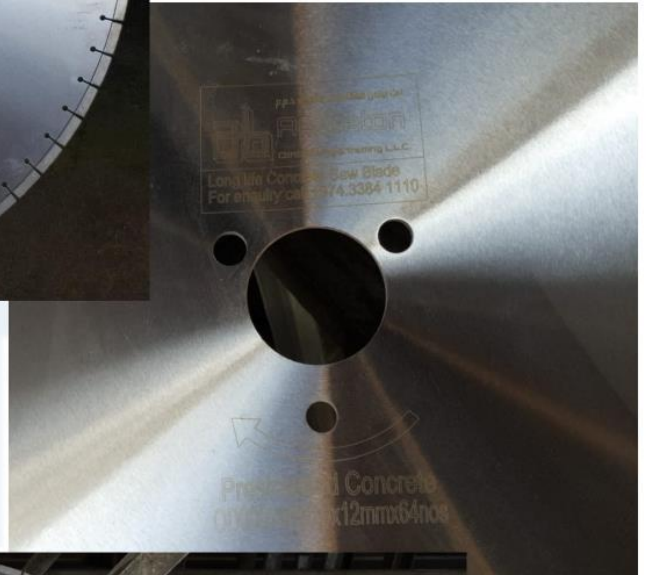
Specification

Diameter:900mm, 1300mm

Segment thickness:4.8/5.0mm or others

Segment height:10/12/15mm

Inner hole:25.4mm, 50mm, 60mm or others



OUR DOCUMENTS





وزارة التجارة والصناعة
Ministry of Commerce and Industry

Registration and Commercial
Licenses Department

إدارة التسجيل
والتراخيص التجارية

مستخرج بعض بيانات السجل التجاري

تاريخ الطباعة: 2021/09/30



رقم التسجيل الضريبي: 5000685065
السمة التجارية:
تاريخ انتهاء السجل: 16/10/2022
راس المال: 50000
جنسية المنشأة: قطر

رقم السجل التجاري: 105013
أرت بيتون للمقاولات والتجارة
تاريخ إنشاء السجل: 17/10/2017
الشكل القانوني: شركة ذات مسؤولية محدودة
حالة السجل: نشط
عدد الفروع: 0

معلومات الاتصال

أرقام الاتصال: +97466005102
صندوق البريد: 19115

الشركاء

الحالة	النسبة	الجنسية	رقم السجل	رقم الإثبات	الأسم
نشط	10	روسيا		27964300019	ياكترينا كريمنايا
نشط	39	اوكرانيا		27480400014	حامد الشريف
نشط	51	قطر		27863400946	خالد محمد سليمان عبدالقادر الشيخ

المدرء (المخولون بالتوقيع)



Page 1 of 2

رقم السجل : 105013



تشهد غرفة تجارة و صناعة قطر بان المنشأة المذكورة اعلاه سجلت لدينا

Qatar Chamber certifies that the above mentioned establishment has been registered



وزارة التجارة والصناعة
Ministry of Commerce and Industry

إدارة التسجيل
والتراخيص التجارية

Registration and Commercial
Licenses Department

مستخرج بعض بيانات السجل التجاري

الصفة (الصلاحية)	الجنسية	رقم السجل	رقم الإثبات	الأسم
صلاحيات كاملة ومطلقة - مدير	روسيا		27964300019	ياكترينا كريمناكايا
صلاحيات كاملة ومطلقة - مدير	قطر		27863400946	خالد محمد سليمان عبدالقادر الشيخ
صلاحيات كاملة ومطلقة - مدير	اوكرانيا		27480400014	حامد الشريف

الأنشطة التجارية

إسم النشاط	الرقم
صناعة منتجات المعادن اللافلزية الأخرى (منتجات غير معدنية)	2300000
تركيب أنظمة عازل الحرارة و الصوت و الذبذبات	4329500
الانشاءات و المقاولات العامه	4100001

إسم النشاط	الرقم
تركيب أنظمة العوازل المائية	4329901
اعمال صيانه المباني	8110031
التجارة في مواد البناء	4752801



Page 2 of 2
رقم السجل : 105013



تشهد غرفة تجارة و صناعة قطر بان المنشأة المذكورة اعلاه سجلت لدينا

Qatar Chamber certifies that the above mentioned establishment has been registered

2020/12/23
No 1 of 1

تاريخ الطباعة:
صفحة رقم:



Registration and Commercial
Licenses Department

وزارة الاقتصاد والتجارة
Ministry of Economy and Commerce

إدارة التسجيل
والتراخيص التجارية

رخصة تجارية



رقم الرخصة: 145261
الاسم التجاري: أرت بيتون للمقاولات والتجارة
نوع المنشأة التجارية: شركة
السمة التجارية:
رقم إصدار الرخصة: 2017/12/28
تاريخ انتهاء الرخصة: 2021/12/22
رقم السجل التجاري: 105013

بيانات المدير المسؤول :

اسم المدير المسؤول: حامد الشريف
رقم الإثبات: 27480400014

بيانات الموقع :

تصنيف الموقع: تجاري
نوع الموقع: مكتب تجاري
المنطقة: 56
الشارع: السوق المركزي
رقم الشارع: 995

الأنشطة التجارية :

جنسية المدير المسؤول: اوكرانيا
نموذج ختم المنشأة التجارية :



عقار رقم: 145
رقم الدور/ الوحدة: 1
اسم مالك العقار: حمد محمد حمد عبدالله المانع
وصف العنوان:

إسم النشاط	الرقم
اعمال صيانة المباني	8110031
التجارة في مواد البناء	4752801

إسم النشاط	الرقم
تركيب أنظمة العوازل المائية	4329901
تركيب أنظمة عازل الحرارة و الصوت و الذبذبات	4329500
الانشاءات و المقاولات العامه	4100001



وزارة الاقتصاد والتجارة
إدارة التسجيل والتراخيص التجارية

WE ARE

TEAM

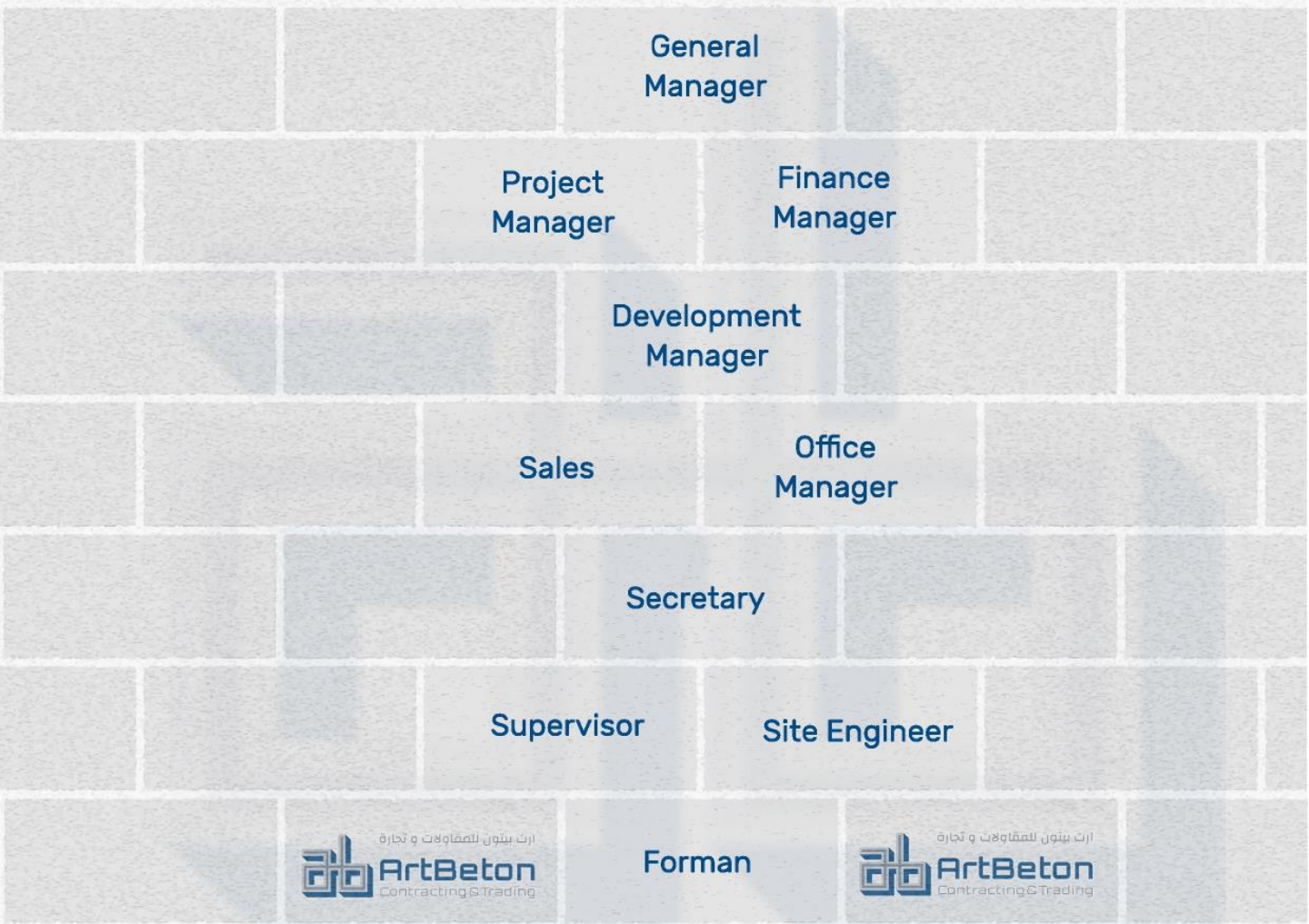
COMPANY CHART

All by All!

Together we strong!

Union is solution!

All this excerpctions about our team. The wall, could be strong only if all bricks are together. In business it very important to find to whom you can trust and to be sure that all your goals will be reached. That's why, our team is priority in our company - if our employees's spirit is strong, be sure, our partnerships with customers is strong too.



OUR EMPLOYEES

No.	POSITION	QTY
1	General Manager	1
2	Finance Manager	1
3	Project Manager	1
4	Development Manager	1
5	Office Manager	1
6	Secretary	1
7	Sales	3
8	Supervisor	1
9	Site Engineer	1
10	Forman	2
11	Skilled Labours	8
12	Labours	20

OUR EQUIPMENT

No.	POSITION	QTY
1	Excavator	1
2	Fork lift	1
3	Telescope lift	1
4	Man lift 13m.	1
5	Mobile crane	1
6	Pickup car	3
7	Pickup truck 3t.	1
8	Boom truck	1
9	Construction shelter	1
10	Petrol generator	2
11	Working tools	∞
12	Consumables	∞



ارت بيتون للمقاولات و تجارة ذ.م.م

ArtBeton

Contracting & Trading L.L.C.

ArtBeton Contracting & Tr. L.L.C.

Abu hamour, Wholesale Market str. 995, B# 147, Office 01,
Al Mana Business Center 3, P.O. Box 19115, Doha - QATAR.

Tel: +974.4029 8578 Mob +974.33841110

email: *artbetonq@gmail.com or info@artbeton.qa,*
sales@artbeton.qa



Website: www.artbeton.qa

